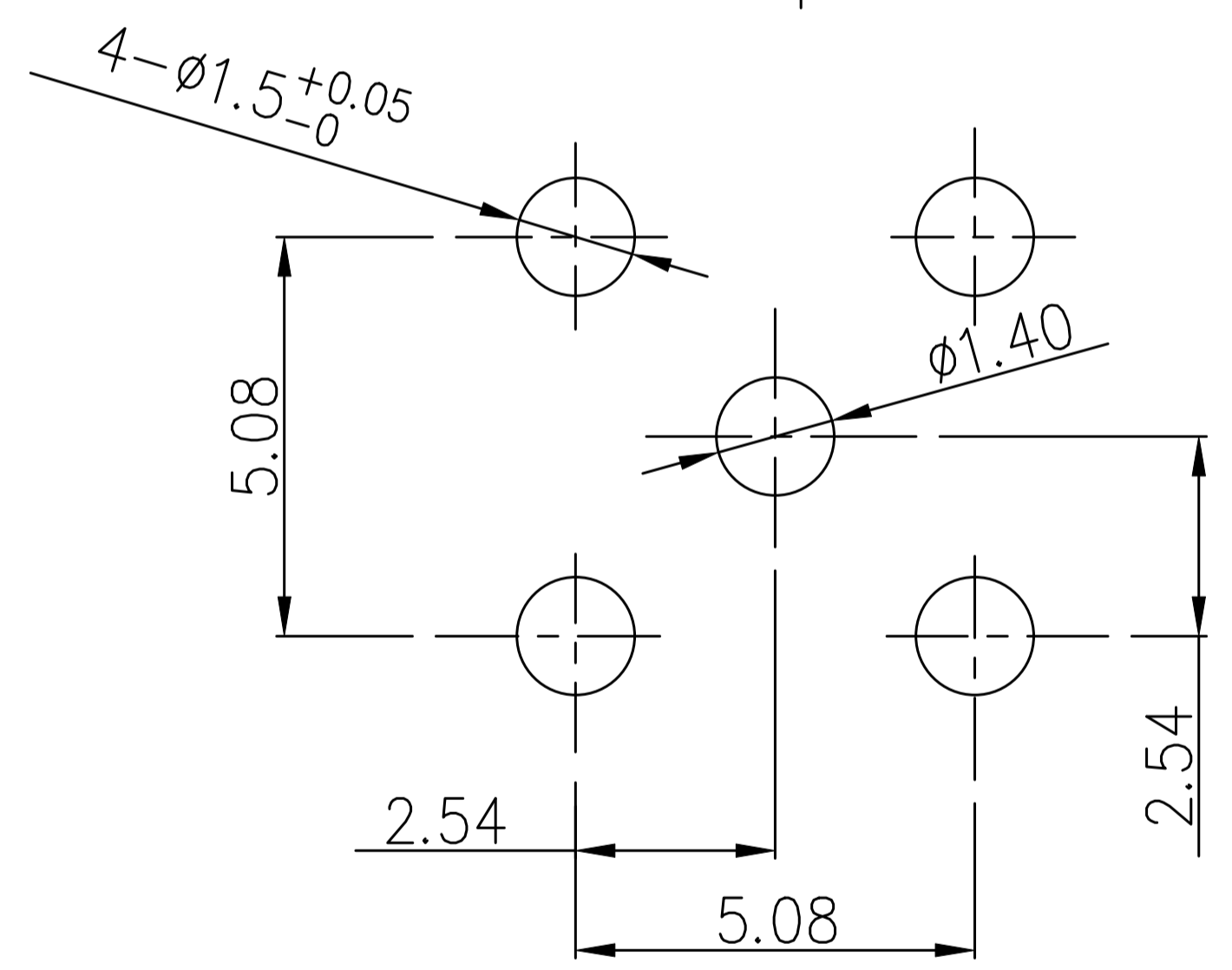
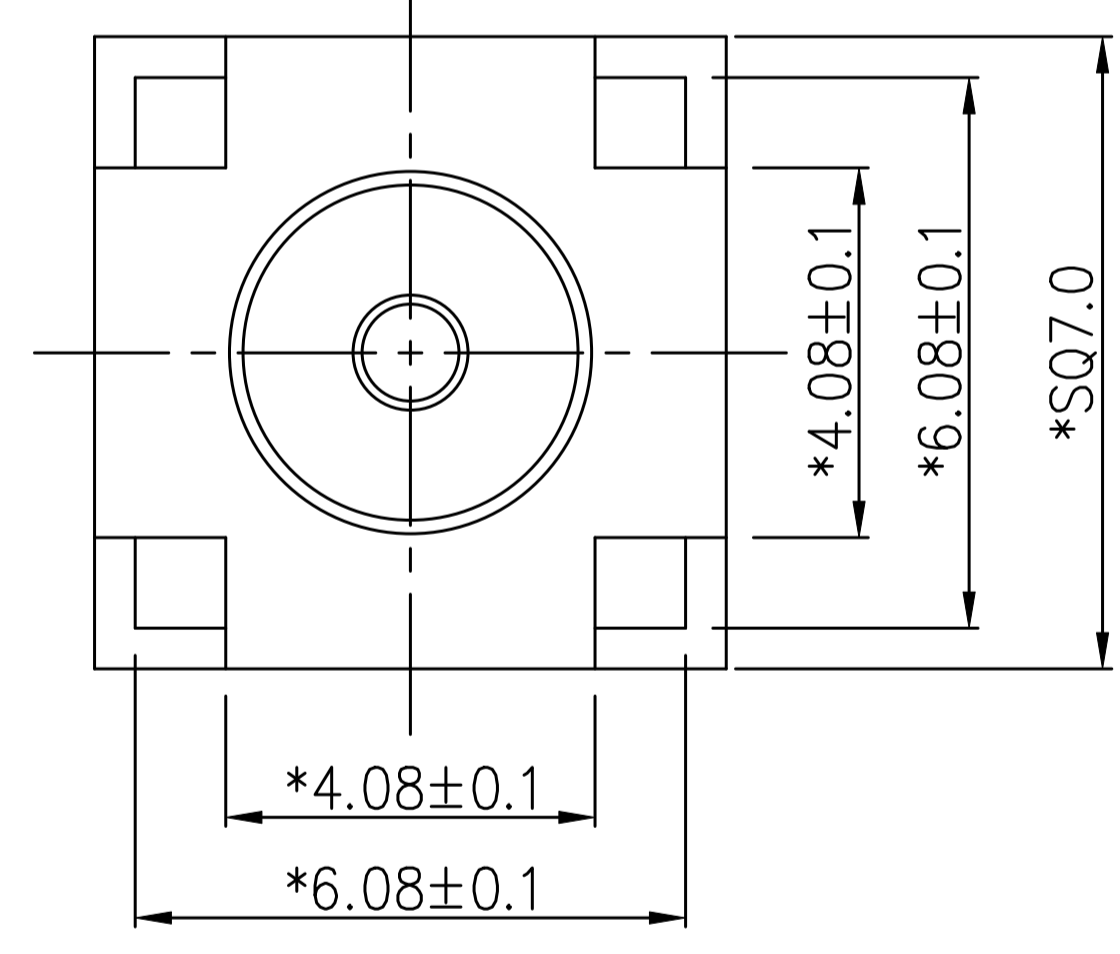


Model No.: SMA-KWE902
 Material: brass with gold-plated surface
 SMA-KWE female head right angle (90 degrees) - external screw type, internal hole, half thread

1. Electrical Characteristics
- 1.1 Impedance: 50 Ohm
 - 1.2 Working Frequency: DC-3 GHz
 - 1.3 S.W.R.: ≤1.5
 - 1.4 Working Voltage: 335V/ Max
 - 1.5 Insulation Resistance: 5000 Mohm
 - 1.6 Contact Resistance: Center contact: 3 Mohm
 - 1.7 External contact: ≤2 Mohm

2. Work Environment
- 2.1 Operating Temperature Range: -55°C ~ +125°C
 - 2.2 Salt Spray Test: 48H



PCB LAYOUT

5	Four angles SQ7.0*8.90	C3604 Gold-plated 1u"	SMA070088G-4542	1
4	Insulator OD4.10*4.20	PTFE White	SMA041042I-1514	1
3	Insulator OD4.20*7.20	PTFE White	SMA042072I-1535	1
2	PIN OD1.35*18.70	C3602 Gold-plated 2u"	SMA135187G-2143	1
1	Screw thread SQ7.0*15.1	C3604 Gold-plated 1u"	SMA070151G-0978	1
Item No.	Part Name/Specification	Material	Part No.	QTY.

	DreamLNK ® 深圳市骏晔科技有限公司 SHENZHEN DREAMLNK TECHNOLOGY CO., LTD			
	Tolerance 未注公差		Part Name. 品名 SMA-KWE902	
.X ±0.2	Material. 材			
.XX ±0.10	Finish. 理			
.XXX ±0.05	Scale. 比例 1:1	Draw .	Check.	App. 核准
未注角度公差 ±1°	REV. 版本/次 A/0	20.06.09	20.06.09	20.06.09
	Unite. 位 mm			